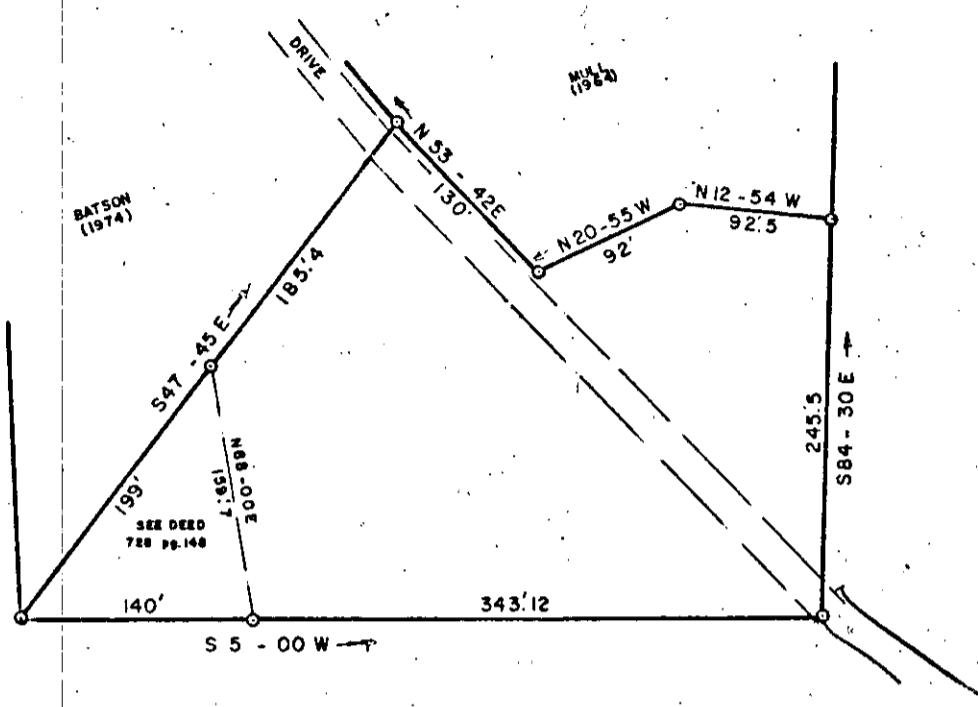
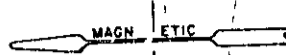


✓ 4-0-166



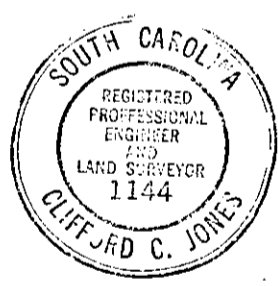
FILED
GREENVILLE CO. S.C.
OCT 11 4 28 PM '74
DONNIE S. TANKERSLEY
R.H.C.

THIS PLAT IS NOT A SUBDIVISION
AS DEFINED BY THE GREENVILLE
COUNTY SUBDIVISION REGULATIONS.
10/11/74 *J. Coleman House*
~~Chairman, Secretary, or Director of~~
Planning.
Greenville County Planning Commission

NOTE:
ORIG. BOUNDARY BY
JC HILL 1948
SEE P.B. TT-141

OCT 11 1974

RECORDING FEE
PAID \$ 1.25
Photo



PROPERTY OF

LOYD BATSON

GREENVILLE COUNTY, S.C.
SCALE 1"=100' OCT. 7, 1974

9597

JONES ENGINEERING SERVICE 1004 E. PERRY RD.